

## H.I.D. Conversion Kit

Model number : \_\_\_\_\_

Ballast ID number R : \_\_\_\_\_

Ballast ID number L : \_\_\_\_\_

Car Make : \_\_\_\_\_

Car Model : \_\_\_\_\_

Car Year : \_\_\_\_\_

Place of Purchase : \_\_\_\_\_

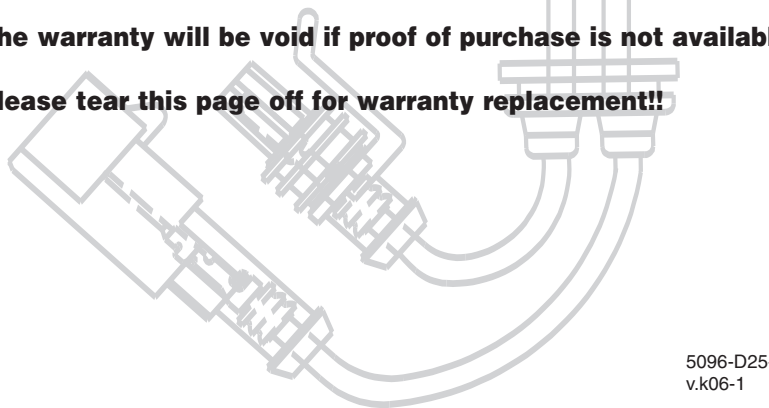
Proof of Purchase : \_\_\_\_\_

Period of Use : \_\_\_\_\_

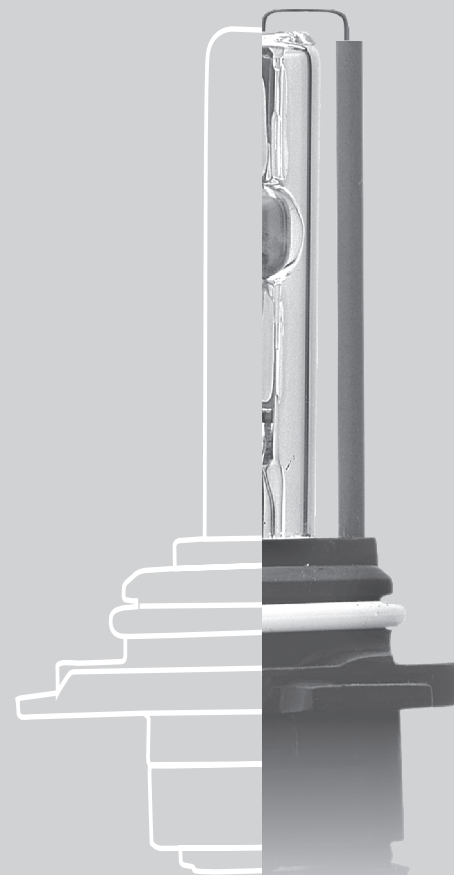
Purchase Date : \_\_\_\_\_

**The warranty will be void if proof of purchase is not available!**

**Please tear this page off for warranty replacement!!**



5096-D25-12  
v.k06-1



# USER ' S MANUAL

## Table of Contents

### Page 1

Table of Contents

### Page 2

To begin-customer product relationship

### Page 3

Precautions regarding Handling & Safety/Caution in use

### Page 4

Component Parts & Wiring Diagram

### Page 5

Wire harness installation Guide

### Page 6

Installation Instruction & special instruction

### Page 7

Warranty, HID knowledge & Information

### Page 8

Warranty Form

## To begin-customer product relationship

### To begin:

Thank you for purchasing this H.I.D. conversion kit!! We believe that this user's manual will not only be helpful for first time users, but also aid experienced users to further their knowledge and experience. Please be sure to read and completely understand the entire manual before attempting any use of this product. We also recommend that this manual be stored in the vehicle for easy reference.

FOR CERTAIN COUNTRY THIS PRODUCT IS INTEND USE FOR RACE OR EXHIBITION PURPOSE ONLY. PLEASE CHECK WITH YOUR LOCAL AUTHORITY FOR THE RIGHT TO USE THIS PRODUCT. VEHICLES IN OPERATION ON HIGHWAY ARE SUBJECTED TO THE RULES AND REGULATIONS GOVERNING VEHICLE OPERATION ON SUCH HIGHWAY.

## Customer product relationship

### (Be sure to read)

The vehicle and its intended usage are the result of in depth, detail research by individual vehicle manufactures striving for the highest level of customer safety, comfort and reliability. Our company believes that our products supplement such vehicles with highest levels of efficiency and convenience. Even though our company strived to provide the customer with highest levels of safe and some operation for our product, there may be times when some of the safely features offered by the vehicle manufacturer may not be maintained in exchange for the features and convenience offered by our products. In these situations, it becomes necessary for consideration and judgment regarding safely to be the sole responsible of the customer. In order for the vehicle of the customer and our product to be used safely and pleasantly, please be sure to read and fully understand the vehicle instruction manual before attempting any use of this product.

## Precautions regarding Handling & Safety

### (Please be sure to read)

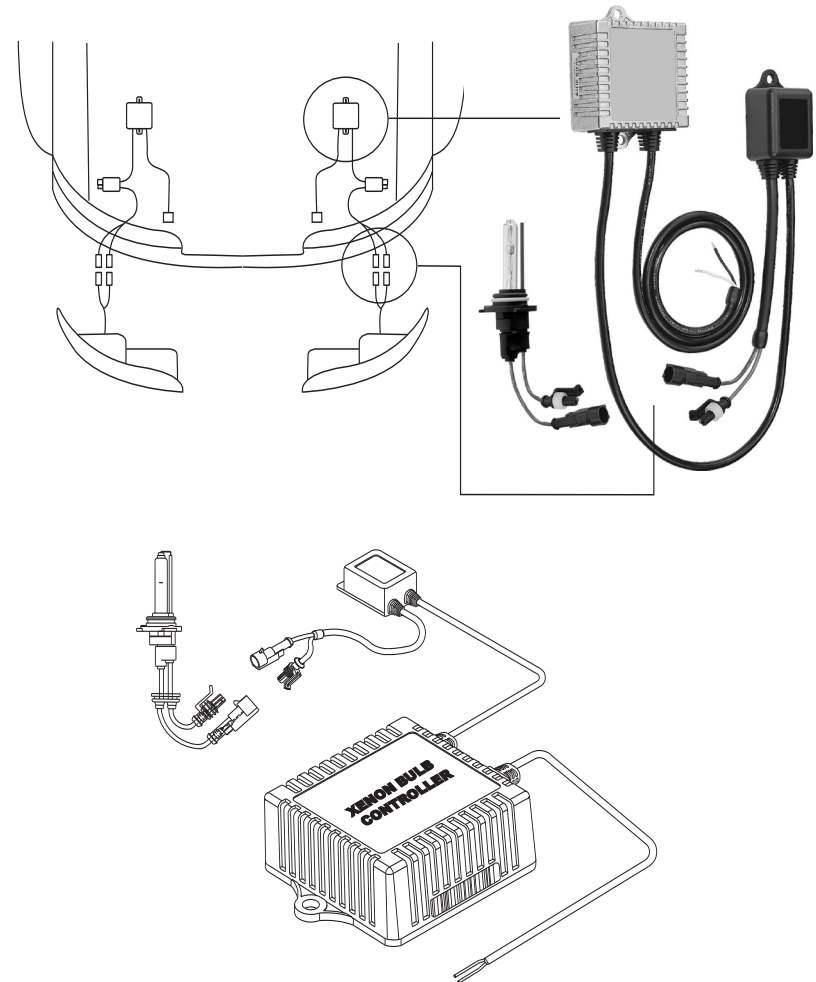
Proper installation and proper operation are essential for the safe use of this product. Please be sure to read and fully understand both this instruction manual and the vehicle instruction manual before attempting any use of this product. When using this product in a way not specified in this manual, any special consideration regard safety issues will become the sole responsibility of this customer. In order for this product to be used safely, it is necessary to follow certain matters in this manual to prevent any injury to yourself or others and to prevent any damage to property.

- \* Before installation this product, please be sure that the engine that the work is to be performed upon has sufficiently cooled down. Immediately after shut-off, the engine and surrounding pipes retain high temperature increasing the risk of severe bodily burns and should be considered extremely dangerous.
- \* Only a skilled technician should perform the installation and wiring of this product or someone properly trained in the installation procedures. Installation and wiring of this product by anyone other than skilled technician is extremely dangerous and may increase the risk of accidents, injury, and burns.
- \* Please be sure to carefully examine the installation points and installation procedures to prevent any omissions and disturbances to driving. Careless or improper installation points and installation procedure many dangerously increase the risk of vehicle damage or driving impairment.

## Caution in use

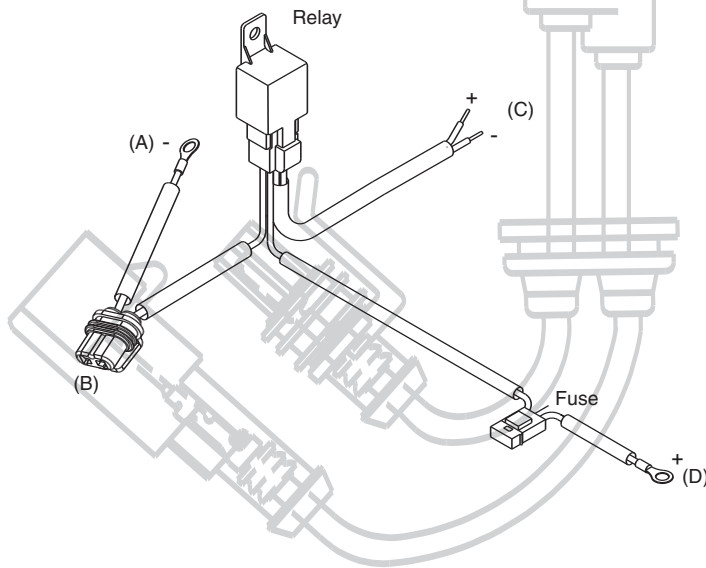
- The Hid burner of this equipment is brighter than Halogen bulb. For this reason, if the optical axis "beam axis" is not in an appropriate location, it may blur the approaching vehicle leading to an accident. Adjust optical axis correctly at a shop operating correct facilities.
- Do not touch H.I.D. burner, ballast, igniter, power plug, and wire after turning on the system. This system generates over 20,000 volts, therefore it might cause burns or fatal accidents by the electric-shock.  
Do not turn the unit on and off repeatedly, because the life span of the burner may be reduced. Sometimes the H.I.D. system will not turn on, it is an indication that the safety circuit is activated.

## Component parts, Wiring Diagram



## Wire harness installation Guide

1. This harness is design for both motorcycles and automobiles. Motorcycle would require only one harness, but automobile would require two pieces of the harness, one for left headlight and one for right headlight.
2. To assure safety, please wear nonconductive gloves for this installation.
3. First and foremost disconnect the car battery cables.
4. Unplug the factory's power plug.
5. Layout the harness and locate each connector plug.
6. Please connect the wire harness's 9006 male connector (as shown on box B) to the ballast power plug.
7. Please connect the wire harness's female connector (as shown on box C) to the factory power plug. This connector may be H1, H3, H4, H7, H8, H9, H11, 9004, 9005, 9006, and 9007 models. It depends on the model that this kit is purchased for.
8. Please connect the wire harness negative terminal (as shown on box A) to the car's negative post of the battery (usually black with a negative sign).
9. Please connect the wire harness positive terminal ( as shown on Box D) to the car's positive post of the battery (usually red with a positive sign).
10. Please repeat steps 5-8 for the other side of the headlight (automobile only).
11. Reconnect the car battery cables and make sure all components are properly secured.
12. \* Note \* Some vehicles may not have the battery in the engine bay area, please locate alternative positive and the negative post in the engine bay area.



## Installation Instruction, special instruction

We make every effort using state of the art computer design and new age machinery to ensure correct specification for OEM replacement bulbs. However, due to different automotive companies with different manufacturing techniques and equipment. Slight modification to the bulb and/or housing/retaining clip may be required.

**BULB TYPE: H1, H4, H7, H9, H11, 9004, 9005, 9006, 9007**

## HID Installation

1. First and foremost disconnect the car's negative battery terminal.
2. Remove the factory halogen bulb.
3. Replace with XENON bulbs. (If you vehicle has a dust cap, please replace with something equivalent to ensure a good seal.)
  - DO NOT TOUCH THE BULB (glass tube area)
  - If the bulbs are dirty, use rubbing alcohol to clean the bulbs, but please do not immerse it in any liquid.
4. Find a mounting location for the ballast and the igniter assembly.

Do not drill additional holes on the ballast and the igniter assembling.

  - Mount away from moving components, such as A/C or powering steering pump, air condition fan and radiator.
  - Mount to a solid location.
  - Mount to a good ventilation location (Such as under the headlight for some vehicles.) This method is mainly used preferred by OE original equipment.
  - Some application requires headlight and front bumper to be removed during installation.
  - Allow the necessary distance for the base connector to reach the bulb.
  - Please use the provided double-sided tape, and screws for secure non-conductive mounting.
5. Please plug the male and female igniter adapter to the xenon bulb assembly, and make sure the bulbs are secured tightly with the dust cover cap in it's proper enclosed.
6. Run wiring harness in the engine bay.
  - Avoid placing harness next to or close to liquids or moving parts.
  - Use Zip ties to secure the wiring harness.
7. Attach the power plugs to each ballast, make sure the plugs are securely placed and that its firmly intact.
8. Reconnect the car's negative battery terminal and make sure all components are secured.
9. Turn light switch on and enjoy your brand new Xenon headlights. Allow the light to be on for 10 minutes, this is just a simple burn in procedure.



## Warranty

We warrant that HID lights will not fail under normal use service for a period of one (1) year from the date of purchase. This warranty is void in the case of accident, misuse, or if improper electrical or mechanical installation cause the damage to your lamp. We will not be liable for any loss, damage, incidental, consequential, or otherwise arising from the installation or use of this product. Warranty will be honor by HID authorized dealers only.

## H.I.D. Knowledge & Information

### Kelvin (K)

A basic unit of color temperature used to measure the color of the light output. High Kelvin (K) bulb does not mean more light output, it only means the measurement of color is higher.

### Lumen (Lm)

Lumen is the measurement of light output. The higher the number is, the brighter the light will be.

### Example

6,000K bulbs will have less light output LUMEN when comparing to a 4,200K bulbs, but in color temperature wise the 6,000K bulbs will look brighter look due to the intense color cause by the higher color temperature.

### Our Xenon bulb

Every xenon bulb is manufactured to exact OEM specification and dimension using the latest laser pin -point machine. This will assure the customer with the correct focusing point, and accurate capsule alignment.

### Our Connectors

Feature OE Original Equipment AMP connectors used by top automotive industry manufactures around the world.

### Our Wire

Feature High voltage leak resistance silicon wire.